

Waste Paper Bale Clamps

Models B-400W



The Auramo series B-400W waste paper bale clamps are designed for heavy-duty waste paper bale handling.

The B series are designed for use on both forklifts and wheel loaders. Extremely thin and light design for high residual capacity and with optimal visibility.

High lifting capacity and wide choice of different openings and arm lengths enable efficient handling of all sizes of waste paper bale units.

Thin arm design makes tight bale stacking and knifing between bales easy. Fixed bale arms secure handling even with varying bale dimensions. Wear strips placed in the lower part of the frame and the arms.

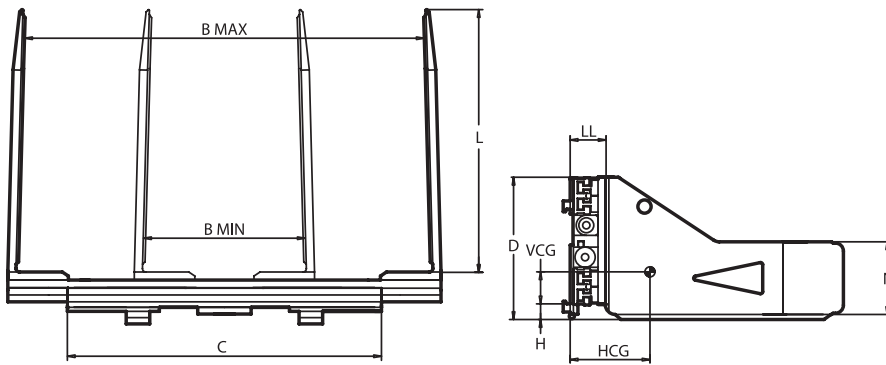
The clamp frame is made of aluminium profiles. The special steel T-profile arm carriers make the clamp extremely strong and rigid. Arm carrier bearings are easily replaceable and require a minimum amount of lubrication.

A variety of arm, rib and mounting options, as well as hydraulic options are available on request.



Range: 4000 Kg

- Bale clamp for handling waste paper bales.
- Aluminium profile frame, strong T-profile arm carriers.
- Bale arms bolted to the arm carriers. Slim and strong arm design ensures easy knifing and tight stacking.
- Built-in integral sideshift improves positioning.



Model	Code	Capacity	Load Centre	Opening Range	Arm Length	Arm Height	Frame Width	Minimum Carriage Width	Height	Weight	Horizontal Centre of Gravity	Vertical Centre of Gravity	Effective Thickness	Mounting Height	Mounting Class
		Q kg	BP mm	B mm	L mm	N mm	C mm	FL mm	D mm	W Kg	HCG mm	VCG mm	LL mm	H mm	ISO 2328
B-400W 12C	61-219	4.000	800	610-2.190	1.200	445	1.400	1.250	825	1.025	279	x	237	74	3 / 4 A
B-400W 14C	61-217	4.000	800	610-2.170	1.400	445	1.400	1.250	825	1.080	321	x	237	74	3 / 4 A
B-400W 16C	61-216	4.000	800	610-2.160	1.600	445	1.400	1.250	825	1.140	394	x	237	74	3 / 4 A
B-400W 12C	71-239	4.000	800	710-2.390	1.200	445	1.400	1.250	825	1.045	276	x	237	74	3 / 4 A
B-400W 14C	71-237	4.000	800	710-2.370	1.400	445	1.400	1.250	825	1.100	317	x	237	74	3 / 4 A
B-400W 16C	71-236	4.000	800	710-2.360	1.600	445	1.400	1.250	825	1.160	390	x	237	74	3 / 4 A
B-400W 12C	61-239	4.000	800	610-2.390	1.200	445	1.600	1.250	825	1.050	273	x	237	74	3 / 4 A
B-400W 14C	61-237	4.000	800	610-2.370	1.400	445	1.600	1.250	825	1.100	314	x	237	74	3 / 4 A
B-400W 16C	61-236	4.000	800	610-2360	1.600	445	1.600	1.250	825	1.165	387	x	237	74	3 / 4 A
B-400W 12C	71-259	4.000	800	710-2590	1.200	445	1.600	1.250	825	1.070	270	x	237	74	3 / 4 A
B-400W 14C	71-257	4.000	800	710-2570	1.400	445	1.600	1.250	825	1.120	311	x	237	74	3 / 4 A
B-400W 16C	71-256	4.000	800	710-2560	1.600	445	1.600	1.250	825	1.185	382	x	237	74	3 / 4 A
B-400W 12C	61-259	4.000	800	610-2590	1.200	445	1.800	1.250	825	1.090	264	x	237	74	3 / 4 A
B-400W 14C	61-257	4.000	800	610-2570	1.400	445	1.800	1.250	825	1.140	304	x	237	74	3 / 4 A
B-400W 16C	61-256	4.000	800	610-2560	1.600	445	1.800	1.250	825	1.210	374	x	237	74	3 / 4 A
B-400W 12C	71-279	4.000	800	710-2790	1.200	445	1.800	1.250	825	1.110	261	x	237	74	3 / 4 A
B-400W 14C	71-277	4.000	800	710-2770	1.400	445	1.800	1.250	825	1.165	301	x	237	74	3 / 4 A
B-400W 16C	71-276	4.000	800	710-2760	1.600	445	1.800	1.250	825	1.230	370	x	237	74	3 / 4 A

Notes:

- Two hydraulic functions required.
- Pressure relief valve on clamping
- Built-in integral sideshift.
- Slim arm design
- Arms bolted to the arm carriers.

Options:

- Special openings.
- Special arm lengths
- Full material arm tip
- Arms welded to the arm carriers
- Colourless arm finish.
- Load backrest.
- Cylinder protection.

