

Waste Paper Bale Clamps

Models B-W



The Auramo model B-W waste paper bale clamps are specifically designed for heavy-duty handling of waste paper bales in the paper industry, as well as plastic and recycling materials.

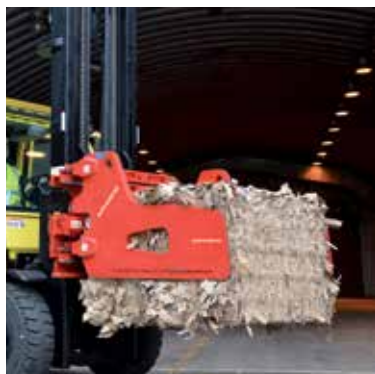
With capacities ranging from 1600 to 4600 Kg at 600-800 mm load center and with a wide choice of opening ranges and arm lengths, this clamp is the ideal choice for all waste handling operations.

All clamps in the range provide a high level of clamping force assuring safe bale handling.

The Auramo waste paper bale clamps are available in a wide range of capacities and options, representing the best solution to the widest variety of handling needs.

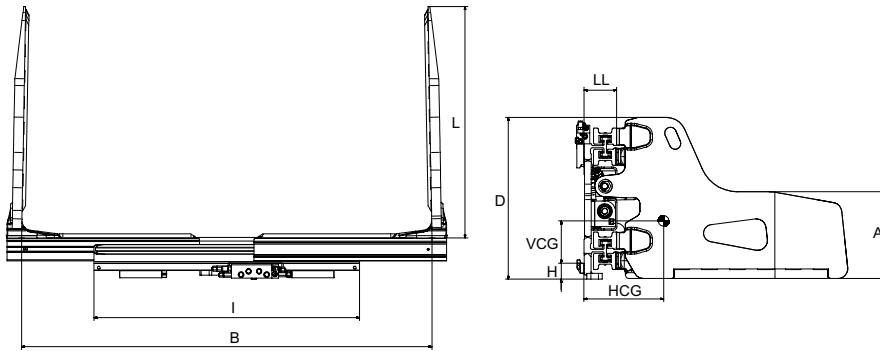
Features:

- Strong steel profile frame specifically conceived for heavy-duty handling. Very rigid frame structure with single piece double "T" profile.
- Front shield plate on the clamp body protects cylinders and hydraulics.
- Superior visibility through, around and above the clamp frame makes this bale clamp safe and easy to use.
- Arm welded directly to the sliding profile with reinforced elbow provides strength and rigidity of the arms. Robust and thin arm profile, allowing tight and efficient bale stacking and damage-free knifing. Round steel rods inside the arms for greater friction and better gripping in waste bale handling. Slot in the upper arm position for easy installation on the forklift truck. Replaceable wear bars welded under the frame and the arms provide additional wear protection.
- Easily replaceable long lasting bearings requiring minimum service and lubrication.
- Hydraulic valve well protected behind the frame.
- Pressure relief valve on sideshifting, opening and clamping to prevent any damage to the clamp and the load.
- Built-in integral sideshift guarantees precise and efficient handling.
- Regenerative valve for higher operation speed.
- Self-aligning cylinder fixing with greasers to avoid breakage.



Range: 1600 - 4600 Kg

- Specifically designed to handle waste paper bales, as well as plastic and recycling materials.
- Strong double T-profile frame.
- Robust arm profile with thin design.
- Gripping steel rods inside the arms.
- Wear bars under bale arms and frame for better protection and easy replacement.
- Integral sideshift to best position the load.
- Front protection shield.



Model	Code	Capacity	Load Centre	Opening Range	Arm Length	Arm Height	Frame Width	Minimum Carriage Width	Height	Weight	Horizontal Centre of Gravity	Vertical Centre of Gravity	Effective Thickness	Mounting Height	Mounting Class
		Q kg	BP mm	B mm	L mm	A mm	I mm	FL mm	D mm	W Kg	HCG mm	VCG mm	LL mm	H mm	ISO 2328
B-16W 10A	64-197	1.600	600	640-1970	1.000	400	970	690	619	380	273	229	122	66	2A
B-16W 12A	64-197	1.600	600	640-1970	1.200	400	970	690	619	411	329	220	122	66	2A
B-24W 10A	50-185	2.400	600	500-1850	1.000	450	1.180	840	708	687	288	243	163	80	2A
B-24W 12A	50-185	2.400	600	500-1850	1.200	450	1.180	840	708	721	333	239	163	80	2A
B-24W 10A	53-198	2.400	600	530-1980	1.000	450	1.250	840	708	709	282	243	163	80	2A
B-24W 12A	53-198	2.400	600	530-1980	1.200	450	1.250	840	708	742	326	239	163	80	2A
B-24W 10A	59-213	2.400	600	590-2130	1.000	450	1.280	840	708	722	278	243	163	80	2A
B-24W 12A	59-213	2.400	600	590-2130	1.200	450	1.280	840	708	755	322	240	163	80	2A
B-24W 10A	64-237	2.400	600	640-2370	1.000	450	1.420	1.025	708	759	269	244	163	80	2A
B-24W 12A	64-237	2.400	600	640-2370	1.200	450	1.420	1.025	708	814	311	240	163	80	2A
B-28W 10B	50-185	2.800	600	500-1850	1.000	450	1.180	930	833	738	275	283	163	80	3A
B-28W 12B	50-185	2.800	600	500-1850	1.200	450	1.180	930	833	772	318	278	163	80	3A
B-28W 10B	53-198	2.800	600	530-1980	1.000	450	1.250	930	833	759	270	283	163	80	3A
B-28W 12B	53-198	2.800	600	530-1980	1.200	450	1.250	930	833	793	311	278	163	80	3A
B-28W 10B	59-213	2.800	600	590-2130	1.000	450	1.280	930	833	775	266	284	163	80	3A
B-28W 12B	59-213	2.800	600	590-2130	1.200	450	1.280	930	833	809	307	279	163	80	3A
B-28W 10B	64-237	2.800	600	640-2370	1.000	450	1.420	1.115	833	802	260	284	163	80	3A
B-28W 12B	64-237	2.800	600	640-2370	1.200	450	1.420	1.115	833	845	298	280	163	80	3A
B-34W 10B	50-185	3.400	600	500-1850	1.000	450	1.250	930	835	890	262	273	173	80	3A
B-34W 12B	50-185	3.400	600	500-1850	1.200	450	1.250	930	835	838	311	268	173	80	3A
B-34W 10B	53-198	3.400	600	530-1980	1.000	450	1.180	930	835	870	275	284	173	80	3A
B-34W 12B	53-198	3.400	600	530-1980	1.200	450	1.180	930	835	908	316	278	173	80	3A
B-34W 10B	59-213	3.400	600	590-2130	1.000	450	1.280	930	835	885	271	284	173	80	3A
B-34W 12B	59-213	3.400	600	590-2130	1.200	450	1.280	930	835	923	312	279	173	80	3A
B-34W 10B	64-237	3.400	600	640-2370	1.000	450	1.420	1.115	835	927	262	284	173	80	3A
B-34W 12B	64-237	3.400	600	640-2370	1.200	450	1.420	1.115	835	965	302	279	173	80	3A
B-42W 10B	53-198	4.200	600	530-1980	1.000	450	1.350	930	840	1.032	268	287	189	80	3A
B-42W 12B	53-198	4.200	600	530-1980	1.200	450	1.350	930	840	1.073	307	282	189	80	3A
B-42W 10B	59-213	4.200	600	590-2130	1.000	450	1.380	930	840	1.043	266	287	189	80	3A
B-42W 12B	59-213	4.200	600	590-2130	1.200	450	1.380	930	840	1.084	304	306	189	80	3A
B-42W 10B	60-237	4.200	600	600-2370	1.000	450	1.600	1.300	840	1.122	253	287	189	80	3A
B-42W 12B	60-237	4.200	600	600-2370	1.200	450	1.600	1.300	840	1.164	290	283	189	80	3A
B-42W 15B	60-237	4.200	600	600-2370	1.500	450	1.600	1.300	822	1.356	388	269	169	80	3A
B-42W 16B	60-237	4.200	600	600-2370	1.600	450	1.600	1.300	822	1.387	417	266	169	80	3A
B-42W 10B	74-264	4.200	600	740-2640	1.000	450	1.590	1.115	840	1.145	250	289	189	80	3A
B-42W 12B	74-264	4.200	600	740-2640	1.200	450	1.590	1.115	840	1.187	285	284	189	80	3A
B-42W 15B	74-264	4.200	600	740-2640	1.500	450	1.590	1.115	822	1.380	383	270	169	80	3A
B-42W 16B	74-264	4.200	600	740-2640	1.600	450	1.590	1.115	822	1.412	412	267	169	80	3A
B-42W 15B	64-237	4.200	600	640-2370	1.500	450	1.520	1.115	822	1.336	393	269	169	80	3A
B-46W 12C	74-264	4.600	800	740-2640	1.200	450	1.590	1.115	955	1.330	313	283	176	127	4 A
B-46W 15C	74-264	4.600	800	740-2640	1.500	450	1.590	1.115	955	1.463	389	283	176	127	4 A
B-46W 17C	74-264	4.600	800	740-2640	1.700	450	1.590	1.115	955	1.549	423	283	176	127	4 A

Notes:

- Two hydraulic functions required.
- Pressure relief valve in clamping, opening and sideshifting.
- Check valve with power regeneration hydraulic circuit.
- Integral sideshift.
- Arms welded directly to the guides.
- Model B42W, B46W with arms longer than 1200 mm are equipped with special arm configuration for handling inside container and railbox (without elbow).

Options:

- Special openings.
- Pressure gauge.
- Load backrest.
- Arms of various dimensions.
- Colorless arm finish.
- Special arms configuration for handling inside container and rail box.
- Cylinder protection

