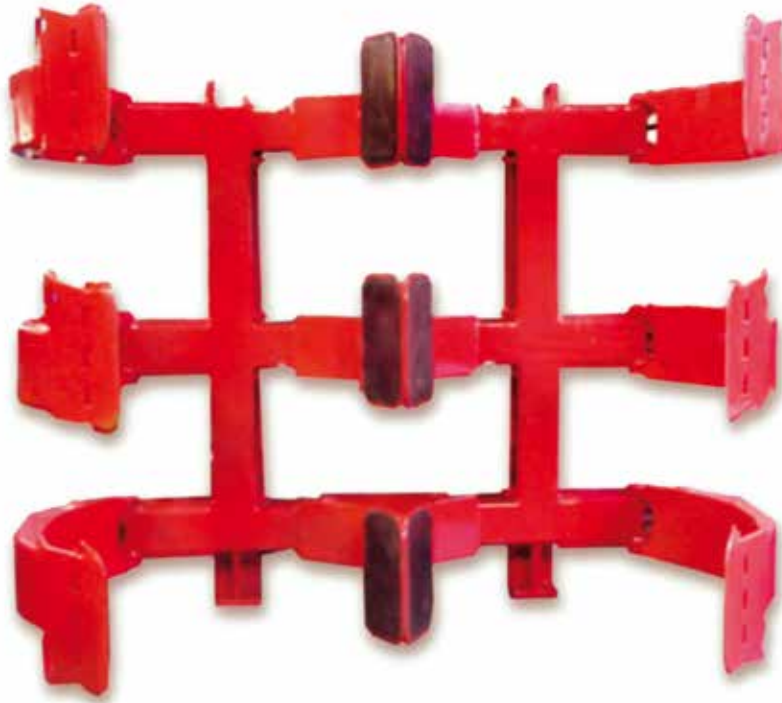


# Paper Roll Clamps

## Models LA-6



The Bolzoni Auramo LA-6 model paper roll clamps are designed for high volume paper handling in paper mills, harbors, paper warehouses and transport companies.

The clamps are designed for vertical handling of 2 - 8 paper rolls. Several model sizes available with a wide capacity and roll range choice.

Depending on the chosen model, the clamps are able to handle paper rolls from 16,500 up to 26,450 Lbs, with maximum paper roll diameter from 2 x 51" up to 2 x 71".

Pivoting arm movement, with short and long arms, provides wide roll range. Twin arm pairs enable the handling of two rolls side-by-side and 3 or 4 rolls on top of each other. Fixed short center arms.

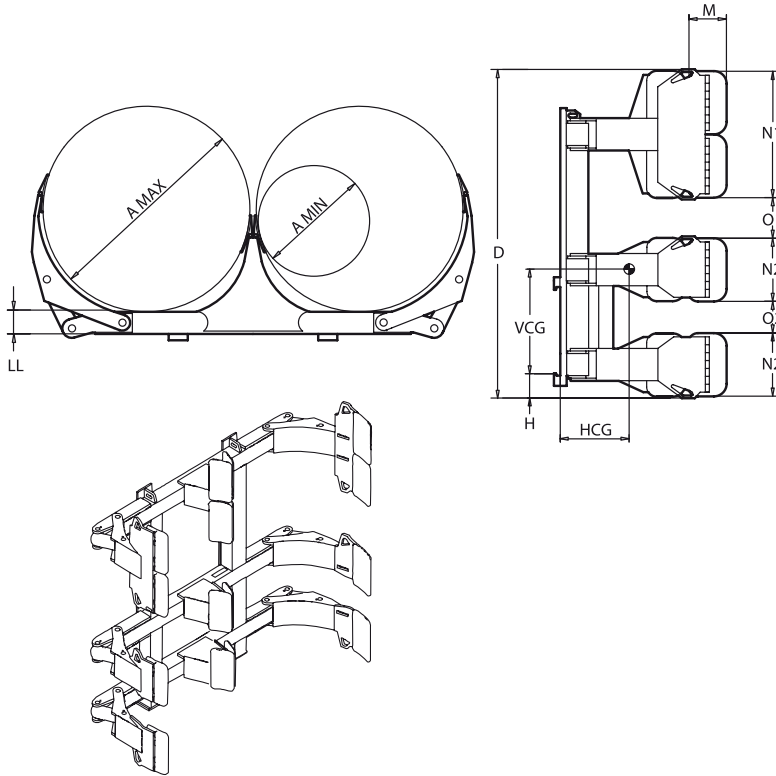
Long arms are split to enable safe and non-damaging handling of two paper rolls on top of each other.

Several contact pad options available.



**Range:** 16,500 - 26,450 Lbs.

- Multiple Paper Roll clamp for
- vertical handling of 2-8 rolls at a time.
- Pivoting arm movement. Six equal length split long arms, fixed center arm. Several arm and contact pad options in standard series.
- Thin-arm-profile ensures tight stacking with excellent visibility and damage-free handling.
- Strong light body with favorable effective thickness maximizes the residual capacity of the truck.



Model	Capacity Lbs.	Load Center	Roll Range	Height	Weight Lbs.	Horizontal Center of Gravity	Vertical Center of Gravity	Effective Thickness	Contact Pads	Contact Pad Gap	Mounting Height	Mounting Class
	Q	BP	A	D	W	HCG	VCG	LL	M x N	O	H	
LA-750-6	16,500	26"	2x[31"-51"]	①	3,220	12.6"	①	6.3"	9.4"x15.7"	①	①	②
LA-900-LS6	19,800	35"	2x[39"-71"]	①	4,870	14.2"	①	7.9"	11"x19.7"	①	①	②
LA-900-L6	19,800	31"	2x[35"-63"]	①	4,820	13.0"	①	7.9"	11"x19.7"	①	①	②
LA-900-6	19,800	26"	2x[31"-51"]	①	4,630	12.6"	①	7.9"	11"x19.7"	①	①	②
LA-1200NL-6	26,450	30"	2x[35"-59"]	①	4,800	15.7"	①	7.9"	11"x19.7"	①	①	②
LA-1200N-6	26,450	24"	2x[31"-51"]	①	4,670	13.4"	①	7.9"	11"x19.7"	①	①	②

### Notes:

- One hydraulic function required.
- Consult Bolzoni Auramo for hydraulic pressure and flow rate recommendations.
- Standard contact pads: cast pad with high-friction surface.
  - ① Consult Bolzoni Auramo.
  - ② Special mounting required.

### Options:

- Special roll ranges.
- Separate sideshift.
- Independent arm movement.
- Contact pad options:
  - steel-sprayed
  - polyurethane-faced
  - rubber faced
  - flexible.
- Hydraulically adjustable frame width. Easy clamp width adjustment to varying paper roll diameter ranges.
- Hydraulically adjustable upper frame. Easy clamp height adjustment to varying paper roll and roll stack height.

