

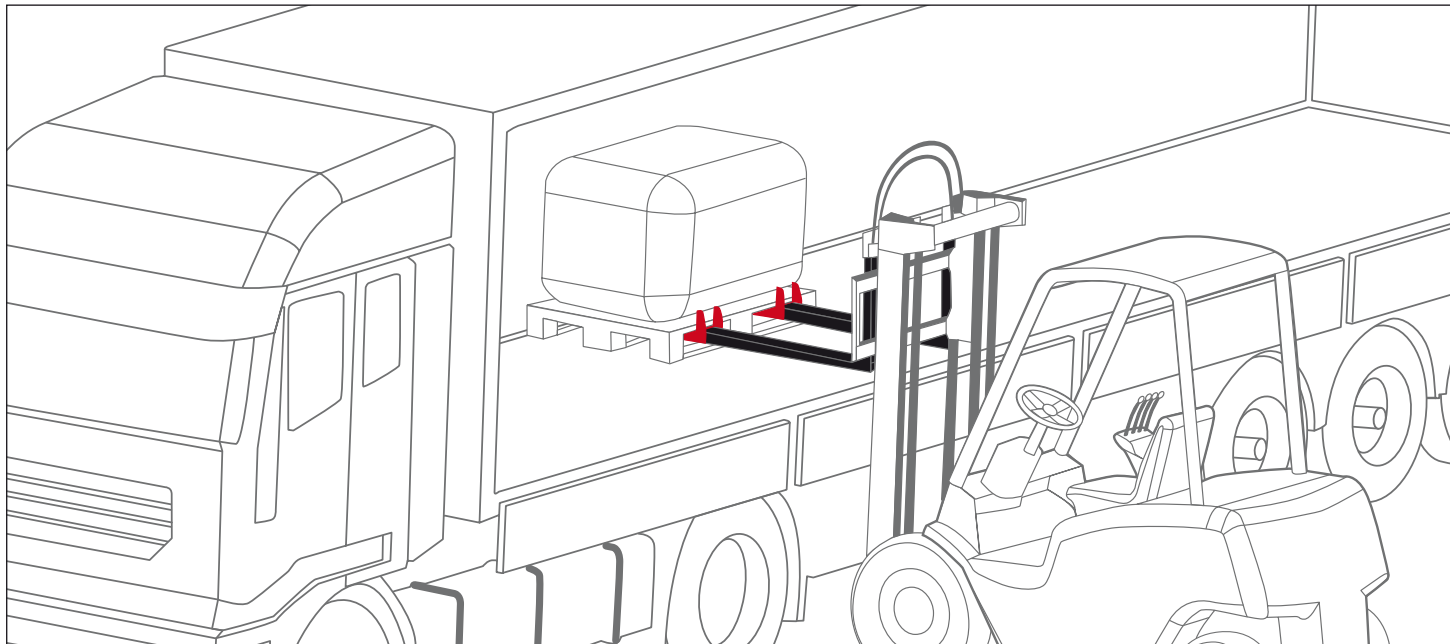
# Reach Forks

Models RS / RD



# Reach your goals

## Increase productivity and save money



## Applications

The Bolzoni Auramo Reach Forks provide an effective time-saving and space optimization solution to all companies operating in logistics centers, food and beverage industries, manufacturing industries, cold stores, storage of goods on multiple pallets and in transport of goods in general.

Reach Forks are suitable for all types of new and existing lift trucks. Their use in combination with fork positioners increases the application range.



**Trucks and trains can be loaded and unloaded from one side:** reduction in turnaround space with increase of storage space, saving in time, saving in fuel/battery consumption, manoeuvring reduction with safety improvement.



**Double-deep stacking:** increase of storage volumes and remarkable space saving, particularly when combining the Bolzoni Auramo Reach Forks with a reach truck able to work in narrow aisles.



**Pallet handling** safe handling of a variety of pallets with different sizes without damages to pallets or goods.

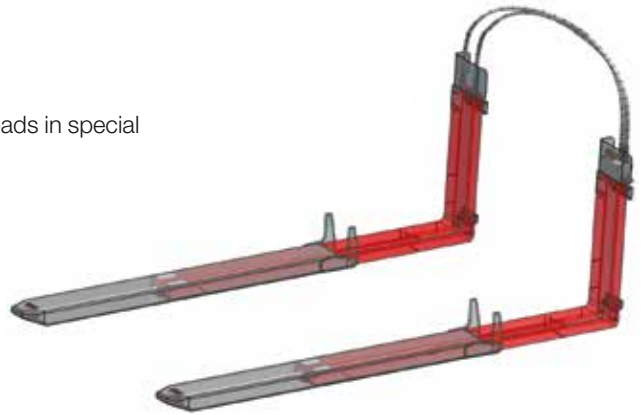
## Features

### Smoothness and damage-free handling

- Friction has been reduced to a minimum by the use of replaceable sliding pads in special nylon material mounted on the tip of the fixed fork.
- Outer fork with rounded edges.

### Strength and longer lifetime

- Strong structure thanks to a single cylinder fitted in the fixed element.
- Chromed cylinder rod with reinforced bolt-on head.
- Drilled and polished cylinder chamber in the fork.
- Outer forks reinforced with a bottom 6 mm Hardox plate.
- Fixed fork with reinforced heel.
- Main components included in the forks avoiding risk of damage.



### Easy-to-service

- Easy-to-dismantle mobile part by simply removing a retaining pin.
- Hydraulic feeding circuit drilled in the fork up to the top of the shank.
- Less hydraulic components thanks to one single cylinder in each fork for the sliding movement.
- Valve block directly flanged on left or right fork.
- Valve and hose fitting protection.

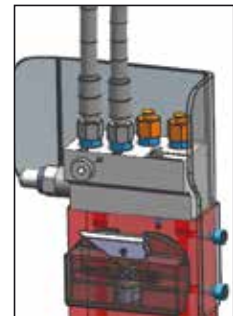


### Synchronized fork movement

- Guaranteed by different diameter cylinders on class ISO2 and by flow divider valve on class ISO3.

### Features of use

- Minimum thickness suitable for any type of pallet.
- Fork length is adjustable from the driver's seat.
- Thanks to hydraulic operation, increased safety and time saving compared to the use of manual forks extensions.
- Maximum truck manoeuvrability when forks are in retracted position.



## Models



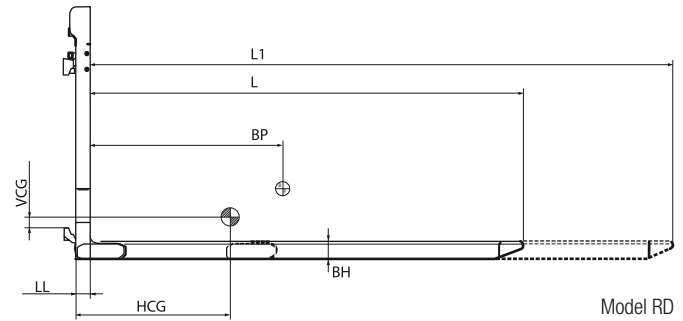
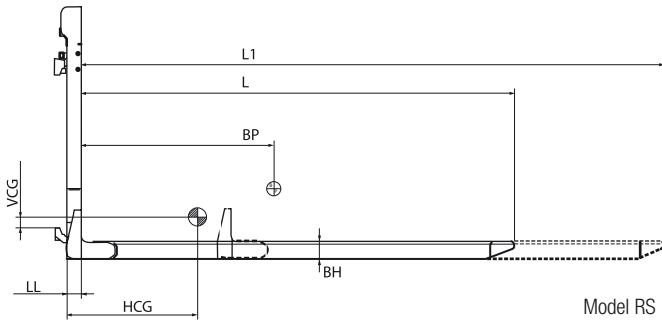
### RS Models

- With pallet stop;
- Loading/unloading of vehicles from one side is remarkably time-saving;
- Handling pallets in two deep stacks, or facilitates access when there are obstacles in front of racks;
- Pallet stop provides accurate positioning of the loads, and adapts the fork's support surface to the pallet length. Standard version has vertical pallet stop aligned with fork shoulder.



### RD Models

- Without pallet stop;
- Handling two pallets at a time reduces the number of lift truck journeys and handling time by 50%;
- Ideal for bulky loads and different size pallets.



| Model | Capacity/<br>Load Center | Capacity/<br>Load Center | Length<br>Closed | Length<br>Extended | Stroke | Fork Size | Weight   | Thickness | Horizontal<br>Center of<br>Gravity<br>Closed/<br>Extended | Vertical<br>Center of<br>Gravity | Mounting<br>Class |
|-------|--------------------------|--------------------------|------------------|--------------------|--------|-----------|----------|-----------|---|----------------------------------|-------------------|
|       | Q/BP<br>Lbs              | Q1/BP<br>Lbs             | L                | L1                 | S      | BA x BH   | W<br>Lbs | LL        | HCG   | VCG                              |                   |

### Models for loads in double depth includes pallet stop

|                |           |           |       |       |       |             |     |      |         |      |     |
|----------------|-----------|-----------|-------|-------|-------|-------------|-----|------|---------|------|-----|
| RS44E0A - 43.3 | 4,400@24" | 1,750@57" | 43.3" | 72.8" | 29.5" | 5.1" x 2.2" | 336 | 1.8" | 16"/22" | 1.2" | II  |
| RS44E0A - 47.2 | 4,400@24" | 1,700@57" | 47.2" | 80.7" | 33.5" | 5.1" x 2.2" | 355 | 1.8" | 17"/25" | 0.7" | II  |
| RS44E0A - 53.1 | 4,400@24" | 1,400@69" | 53.1" | 92.5" | 39.4" | 5.1" x 2.2" | 386 | 1.8" | 20"/30" | 0.4" | II  |
| RS55E0A - 43.3 | 5,500@24" | 2,400@57" | 43.3" | 72.8" | 29.5" | 5.1" x 2.2" | 336 | 1.8" | 16"/22" | 1.2" | II  |
| RS55E0A - 47.2 | 5,500@24" | 2,400@57" | 47.2" | 80.7" | 33.5" | 5.1" x 2.2" | 355 | 1.8" | 17"/25" | 0.7" | II  |
| RS55E0A - 53.1 | 5,500@24" | 2,000@69" | 53.1" | 92.5" | 39.4" | 5.1" x 2.2" | 386 | 1.8" | 20"/30" | 0.4" | II  |
| RS77E0B - 43.3 | 7,700@24" | 3,000@57" | 43.3" | 72.8" | 29.5" | 5.1" x 2.2" | 358 | 1.8" | 15"/21" | 2.8" | III |
| RS77E0B - 47.2 | 7,700@24" | 3,000@57" | 47.2" | 80.7" | 33.5" | 5.1" x 2.2" | 377 | 1.8" | 16"/24" | 2.5" | III |
| RS77E0B - 53.1 | 7,700@24" | 2,700@69" | 53.1" | 92.5" | 39.4" | 5.1" x 2.2" | 408 | 1.8" | 19"/28" | 2.1" | III |
| RS99E0B - 43.3 | 9,900@24" | 3,500@57" | 43.3" | 72.8" | 29.5" | 6.3" x 2.2" | 422 | 1.8" | 15"/21" | 1.2" | III |
| RS99E0B - 47.2 | 9,900@24" | 3,500@57" | 47.2" | 80.7" | 33.5" | 6.3" x 2.2" | 446 | 1.8" | 16"/24" | 1.0" | III |
| RS99E0B - 53.1 | 9,900@24" | 3,500@57" | 53.1" | 92.5" | 39.4" | 6.3" x 2.2" | 481 | 1.8" | 19"/29" | 0.7" | III |

### Models for two pallets

|                |           |           |       |       |       |             |     |      |         |      |     |
|----------------|-----------|-----------|-------|-------|-------|-------------|-----|------|---------|------|-----|
| RD44E0A - 31.5 | 4,400@24" | 4,400@24" | 31.5" | 47.2" | 15.7" | 5.1" x 2.2" | 254 | 1.8" | 12"/19" | 2.6" | II  |
| RD44E0A - 43.3 | 4,400@24" | 3,300@31" | 43.3" | 63.0" | 19.7" | 5.1" x 2.2" | 325 | 1.8" | 16"/22" | 1.2" | II  |
| RD44E0A - 43.3 | 4,400@24" | 2,800@36" | 43.3" | 72.8" | 29.5" | 5.1" x 2.2" | 325 | 1.8" | 16"/22" | 1.2" | II  |
| RD44E0A - 47.2 | 4,400@24" | 2,600@40" | 47.2" | 80.7" | 33.5" | 5.1" x 2.2" | 344 | 1.8" | 17"/25" | 0.7" | II  |
| RD44E0A - 53.1 | 4,400@24" | 2,400@46" | 53.1" | 92.5" | 39.4" | 5.1" x 2.2" | 375 | 1.8" | 20"/30" | 0.4" | II  |
| RD55E0A - 43.3 | 5,500@24" | 3,600@36" | 43.3" | 72.8" | 29.5" | 5.1" x 2.2" | 336 | 1.8" | 16"/22" | 1.2" | II  |
| RD55E0A - 47.2 | 5,500@24" | 3,300@40" | 47.2" | 80.7" | 33.5" | 5.1" x 2.2" | 355 | 1.8" | 17"/25" | 0.7" | II  |
| RD55E0A - 53.1 | 5,500@24" | 2,800@46" | 53.1" | 92.5" | 39.4" | 5.1" x 2.2" | 386 | 1.8" | 20"/30" | 0.4" | II  |
| RD77E0B - 31.5 | 7,700@24" | 7,700@24" | 31.5" | 47.2" | 15.7" | 5.1" x 2.2" | 276 | 1.8" | 12"/18" | 3.3" | III |
| RD77E0B - 43.3 | 7,700@24" | 5,700@31" | 43.3" | 63.0" | 19.7" | 5.1" x 2.2" | 347 | 1.8" | 15"/21" | 2.8" | III |
| RD77E0B - 43.3 | 7,700@24" | 5,000@36" | 43.3" | 72.8" | 29.5" | 5.1" x 2.2" | 347 | 1.8" | 15"/21" | 2.8" | III |
| RD77E0B - 47.2 | 7,700@24" | 4,600@40" | 47.2" | 80.7" | 33.5" | 5.1" x 2.2" | 366 | 1.8" | 16"/24" | 2.5" | III |
| RD77E0B - 53.1 | 7,700@24" | 3,900@46" | 53.1" | 92.5" | 39.4" | 5.1" x 2.2" | 397 | 1.8" | 19"/28" | 2.1" | III |
| RD99E0B - 43.3 | 9,900@24" | 6,400@36" | 43.3" | 72.8" | 29.5" | 6.3" x 2.2" | 411 | 1.8" | 15"/21" | 1.2" | III |
| RD99E0B - 47.2 | 9,900@24" | 5,700@40" | 47.2" | 80.7" | 33.5" | 6.3" x 2.2" | 435 | 1.8" | 16"/24" | 1.0" | III |
| RD99E0B - 53.1 | 9,900@24" | 5,000@46" | 53.1" | 92.5" | 39.4" | 6.3" x 2.2" | 470 | 1.8" | 19"/29" | 0.7" | III |

| Model                     | Oil Flow Rate |             | Oil Pressure |             | Hydraulic Functions |
|---------------------------|---------------|-------------|--------------|-------------|---------------------|
|                           | min.<br>GPM   | max.<br>GPM | min.<br>PSI  | max.<br>PSI |                     |
| RS / RD 44 - 55 - 77 - 99 | 4.0           | 6.6         | 1,740        | 3,630       | 1                   |

### Notes:

- One hydraulic function.
- Q = Capacity when closed.
- Q1 = Capacity at maximum extension.
- Models RS/RD 44 are equipped with cylinders having different diameters for synchronized fork movement.
- Models RS/RD 55 - 77 and 99 are equipped with a flow divider valve for synchronized fork movement.
- Model RS pallet stop height is 3.9".

### Options:

- Different strokes.
- Different dimensions.
- Load backrest.
- Special pallet stop thickness 5.9", height 11.8". See above picture.

